



Show Process Point as Bar Chart

DESIRED USER ACTION

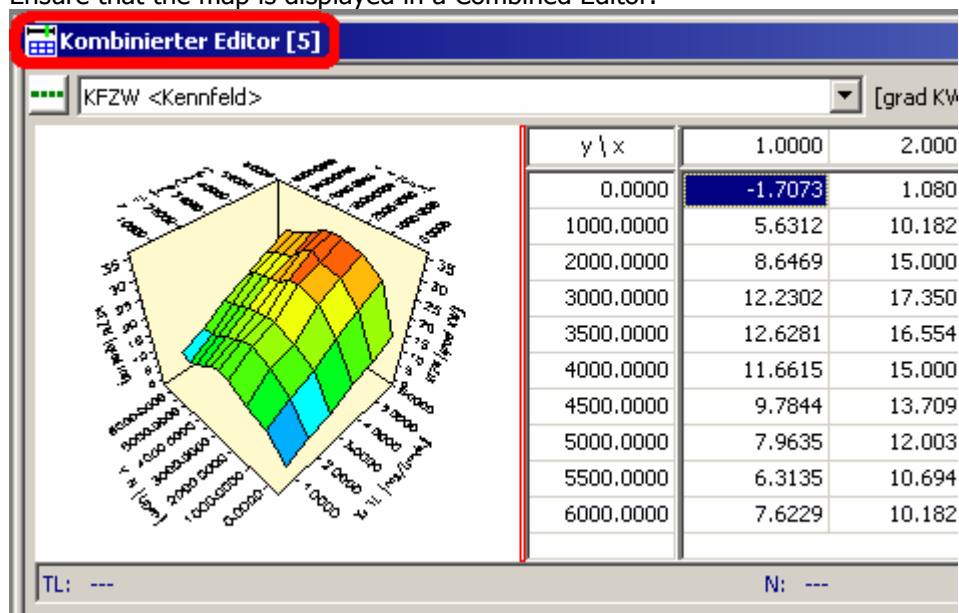
The user wants to have the process point (history) displayed as a bar chart.

CAUSE

SOULTION

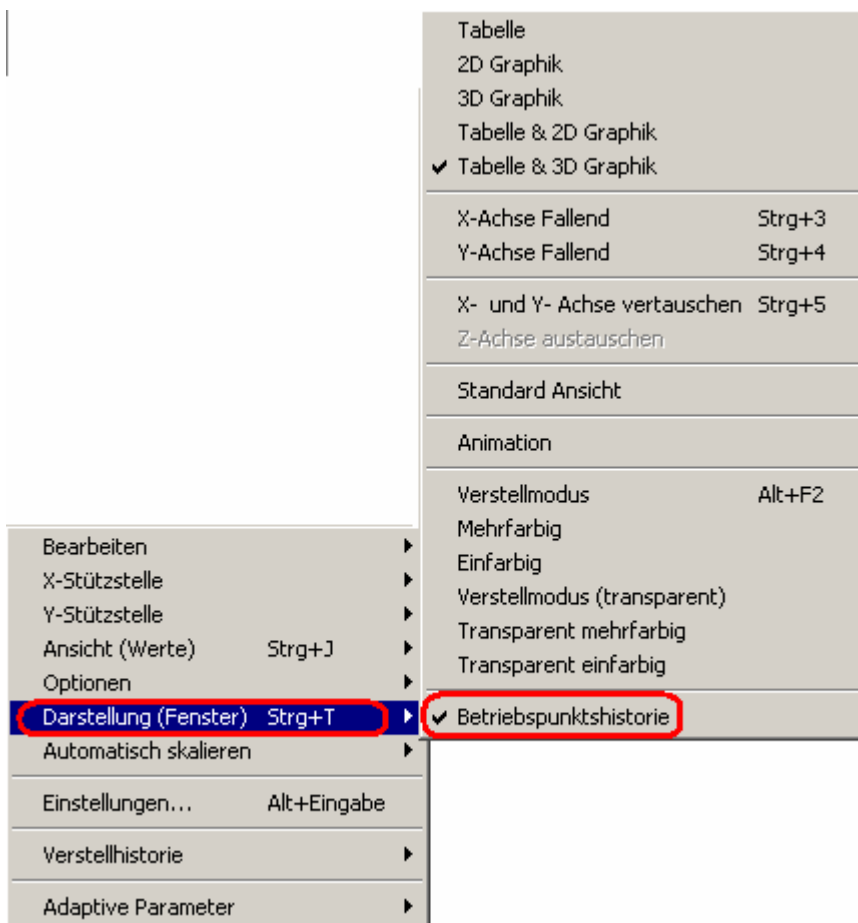
This feature is available in the Combined Editor.

Ensure that the map is displayed in a Combined Editor.

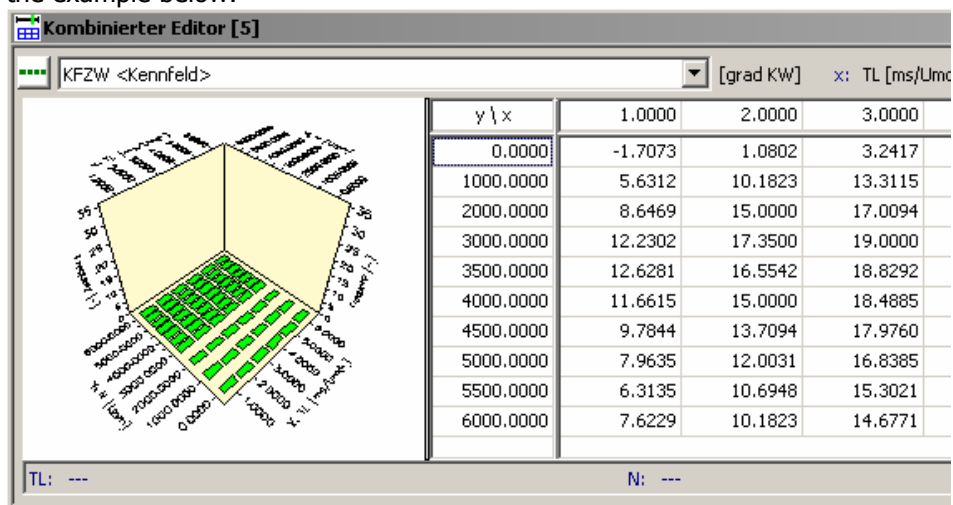


Move your mouse cursor on top of the characteristic map and right click to open the context menu. Select the option View (Window) from the menu. Activate the menu point Process Point History.



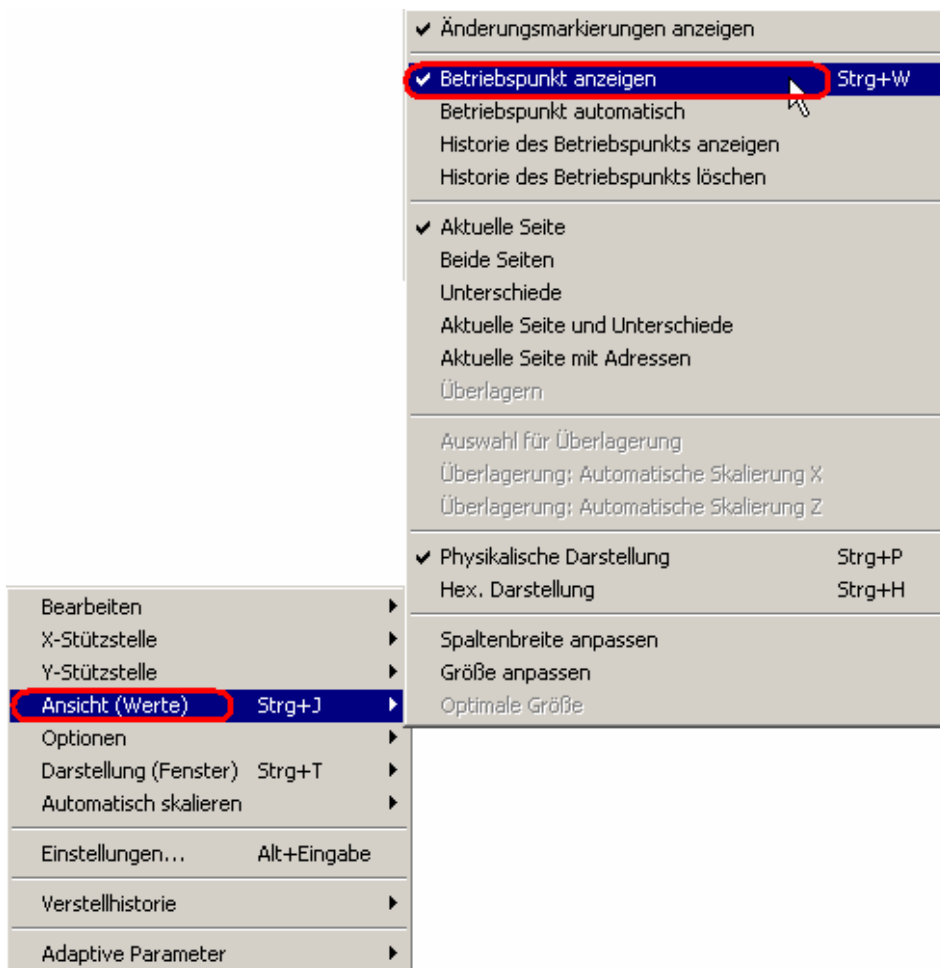


The map in the Combined Editor will look similar to the one shown in the example below:



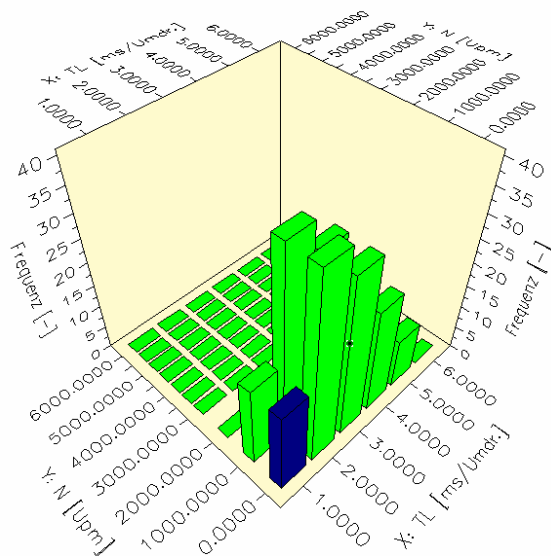


To activate the processing point display, right-click on the map. From the context menu, select the option View (Values) and activate the menu point Show Process Point.



Once the measurement/recording has been started, the processing point will be displayed as a bar chart which will look similar to the one shown below.





Similarly, the process point of a curve can be displayed as a bar chart as well.



APPLIES TO PRODUCT(S)

INCA

ADDITIONAL SEARCH TERMS

