



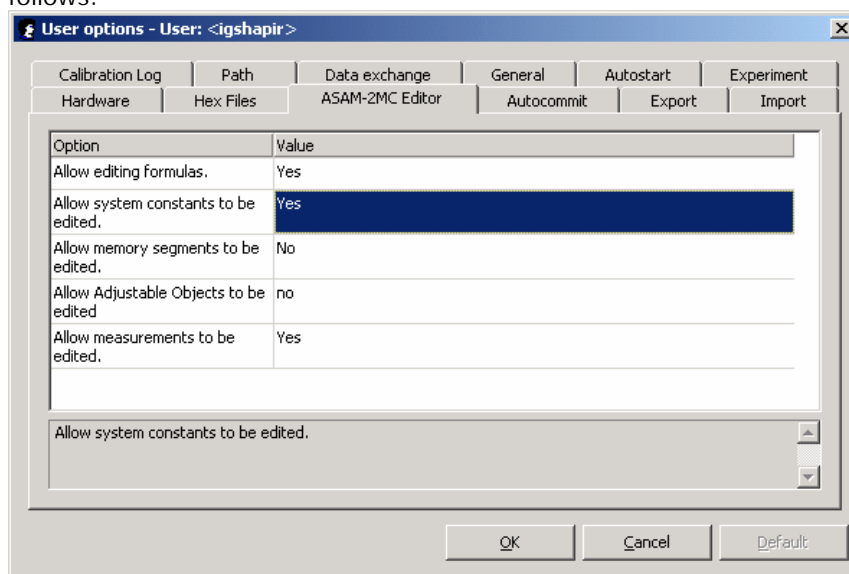
The ASAM2 Editor and "SYSTEM_CONSTANTS"

DESIRED ACTION

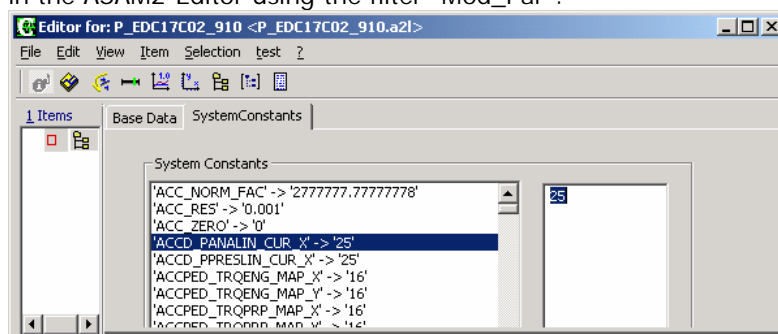
Every ECU-project contains several SYSTEM_CONSTANTS but where can they be displayed and edited in INCA?

SOLUTION

The **User Options** for the **ASAM-2MC-Editor** should be set up as follows:



Subsequently, the "SYSTEM_CONSTANTS" can be displayed and edited in the ASAM2-Editor using the filter "Mod_Par".



APPLIES TO PRODUCTS

All INCA-Versions

ADDITIONAL SEARCH TERMS

SYSTEM_CONSTANT

