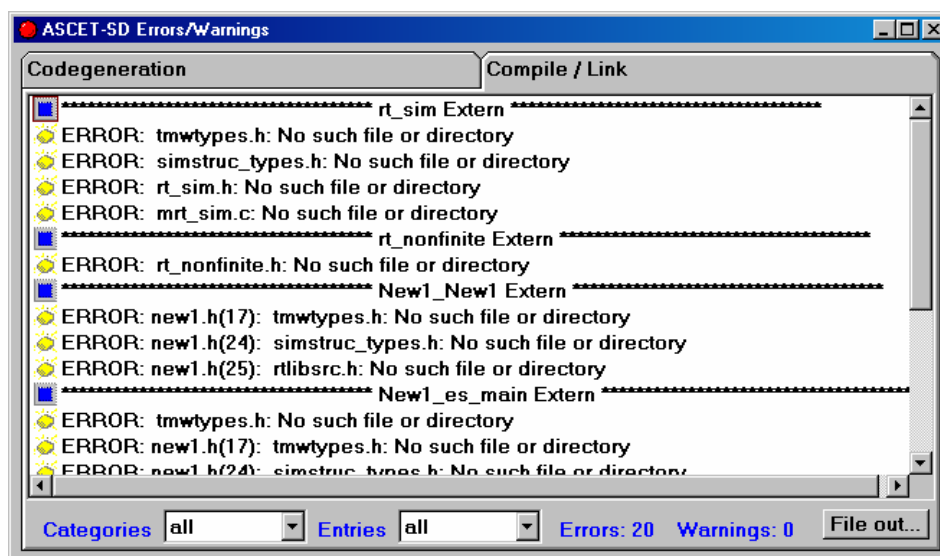




## Build Problems for RTPC RIS projects LCO with LCO V3.2.1

### PROBLEM DESCRIPTION

During the building process of LCO projects (of Type LCD 1.8) for the target RTPC (ES1130 is not affected) that contain SIMULINK™ models integrated with the Realtime Interface to Simulink (RIS), the ASCET-SD Errors/Warnings window displays the following error messages:



These messages indicate that the system files "tmwtypes.h", "simstruc\_types.h", "rtlibsrc.h" and other files were not found. These errors prevent a successful completion of the build process.

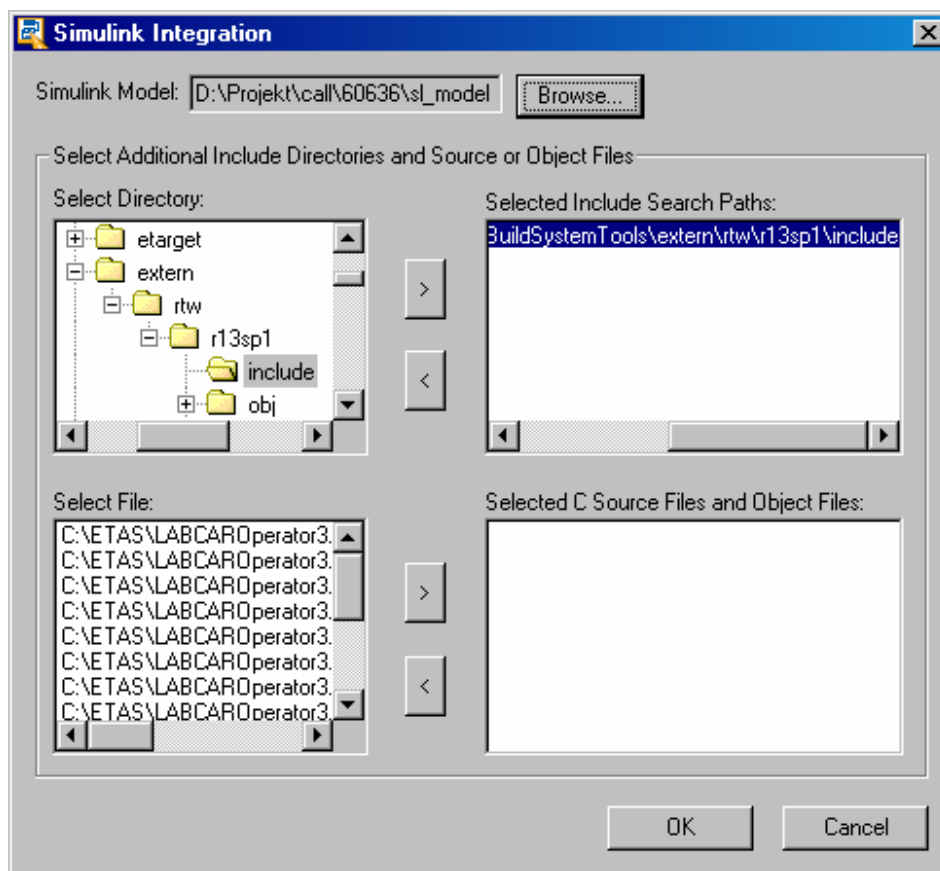
### CAUSE

The compilation and link processes are executed on the RTPC. The displayed files were not transferred to RTPC – even though they were copied from the SIMULINK™ system directory to the LCO system directory.

### RESOLUTION

You will have to import the SIMULINK™ model again into the LCD Project Editor (menu item SIMULINK-IMPORT MODEL...). In the wizard "Simulink Integration" in the section "Select include search paths" please add the following directory:  
"C:\ETAS\LABCAROperator3.2\BuildSystemTools\extern\rtw\r13sp1\include"





Please note: If you are using a different version rather than R13SP1, part of the path string will differ from the one shown above.

Add all other necessary directories and close the wizard by clicking **OK**. On the build command, all files with file extensions C and H in this directory will be copied into the RTPC's code generation directory now.

#### APPLES TO PRODUCTS

LCO(RIS) >= 3.2.0, RTPC

#### ADDITIONAL KEYWORDS

Tmwtypes, error, simulink integration, no such file or directory

