

ISOLAR-A and ISOLAR-B: Intelligent delete feature



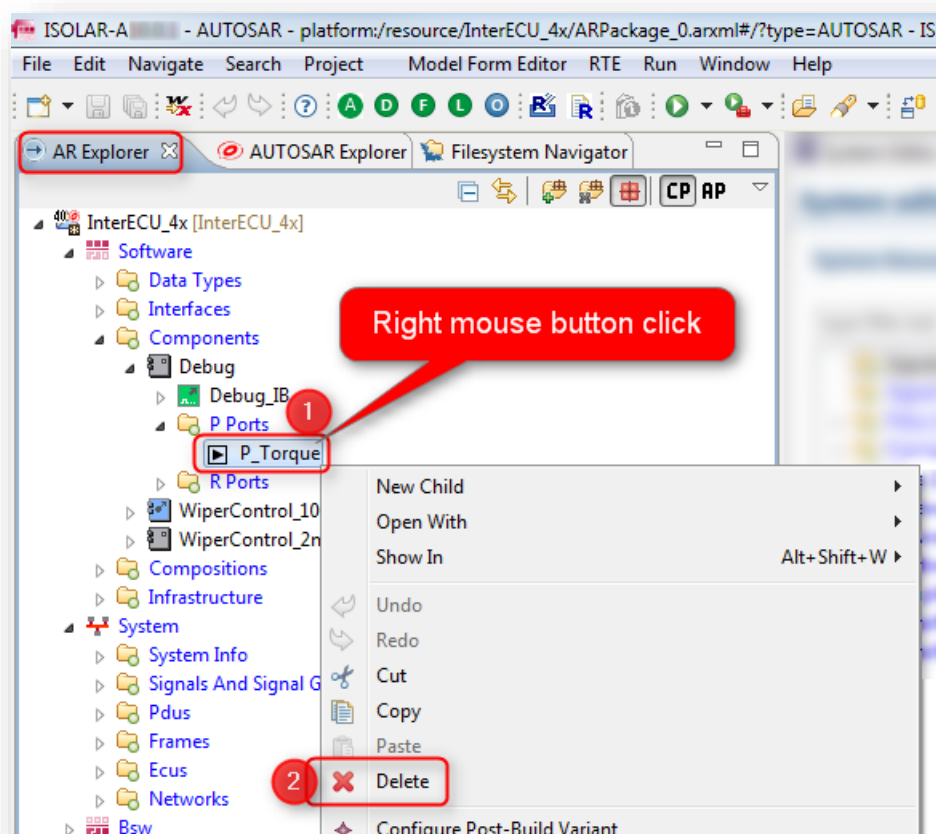
Question

- Delete all referenced data elements automatically when a component is deleted
- When deleting a component's port, then the tool shall delete referenced data elements in the system description
- Example use case:
 - When configuring RTE/Com, we link between data element of DBC_SysDesc.arxml and port of SWC
 - When the port is deleted, then the associated data element in DBC_SysDesc.arxml should be deleted as well

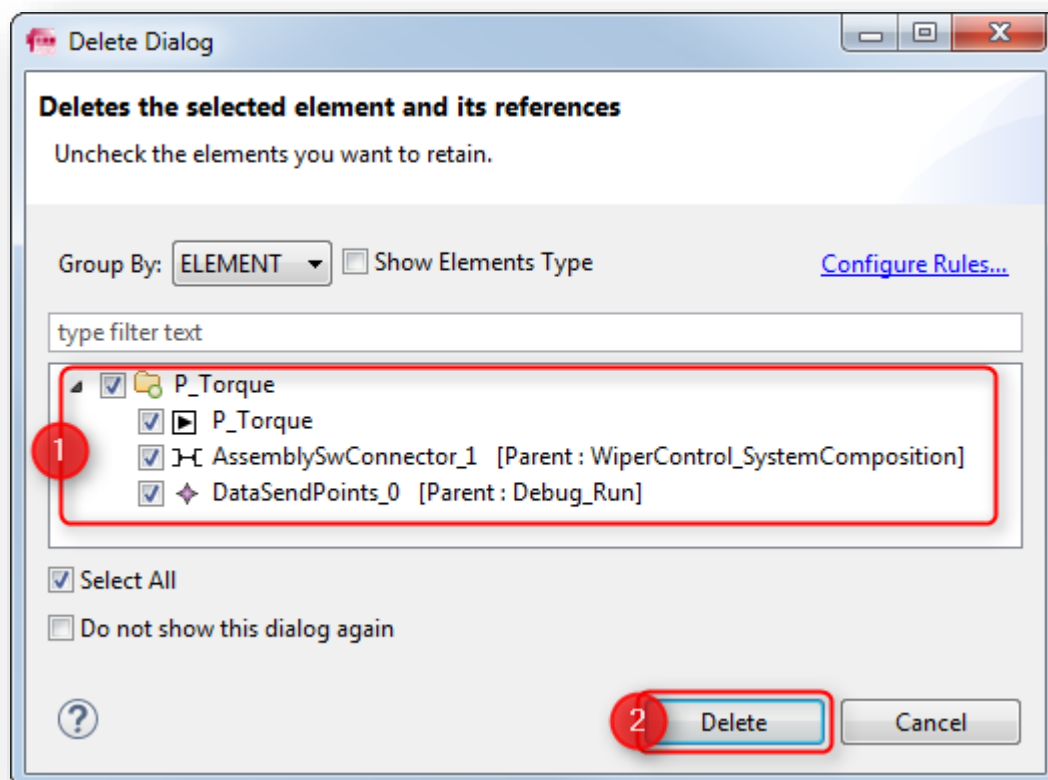


Answer

- Both, **ISOLAR-A** and **ISOLAR-B** provide an "intelligent" delete feature in the AR Explorer
1. In **AR Explorer**, in the AUTOSAR project under **Software** → **Components** → On component to be deleted: Click right mouse button → **Delete**



- In dialog **Delete Dialog**: Uncheck the elements you want to retain → Click **Delete** button



Do you still have questions?

- You will find **further FAQ articles** on the ETAS homepage: www.etas.com/en/faq
- **Movies** corresponding to FAQ articles can be found on the [ETAS YouTube channel](#)
- Please feel free to contact our Support Center, if you have further questions.
- Here you can find all information: <http://www.etas.com/en/hotlines.php>

This information (here referred to as „FAQ“) is provided without any (express or implied) warranty, guarantee or commitment regarding completeness or accuracy. Except in cases of willful damage, ETAS shall not be liable for losses and damages which may occur or result from the use of this information (including indirect, special or consequential damages).