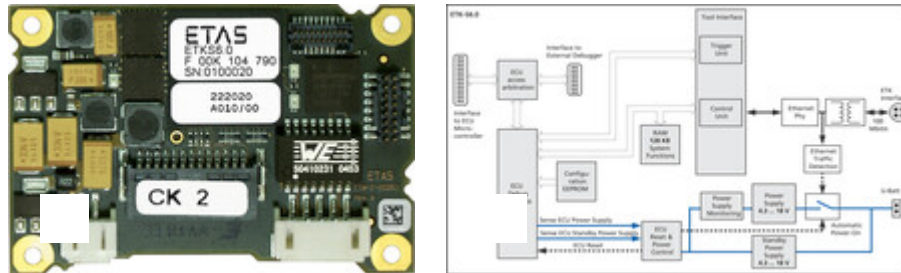


# ETK-S6.0 – ECU Interface



## CPU interface

Supported processors SH72513FCC, SH72512, SH72512FCC, SH72513, SH72544, SH72546RFCC

For a complete list of supported microprocessors, please refer to the product's User's Guide.

Configuration Project-specific configuration for memory configurations stored in EEPROM

## Board

Dimensions (HxWxD) 9.9 x 40 x 60 mm / 0.4 x 1.6 x 2.7 in

## Power supply

Input voltage 4.3 V to 18 V

Stand-by: min. 4.3 V

Input current at 12 V approx. 100 mA normal operation

approx. 10 mA stand-by

## Memory emulation

---

Emulation memory	Processor-specific
------------------	--------------------

---

Measured data memory	Processor-specific
----------------------	--------------------

---

Host interface

---

Serial interface	100 Mbit/s
------------------	------------

---

Double-shielded line, max. 30 m/100 ft

---

Electrically isolated

---

Operation temperature

---

Temperature range	-40 °C to +110 °C / -40 °F to +230 °F
-------------------	---------------------------------------

---

This product has been developed and released for use in automotive applications. For usage in other domains please contact your ETAS representative.

## Ordering Information



- 1 – Interface Connection
- 2 – ETK Connection (for all 100 Mbit ETKs)
- 3 – Power Supply Connection
- 4 – ECU Connection
- 5 – Ethernet PC Connection

Order Name	Short Name	Order Number
ETK-S6.0		
ETKS6.0 Emulator Probe for the Renesas AUD-II debug interface	ETKS6.0	F-00K-104-790



Optional Accessories for ETK-S6.0

**1 - Interface Connection (all 100 Mbit ETKs to ES59x, ES690, ES910)**

ETK Interface Cable 100 Mbit/s, Lemo 1B FFG -                      CBM150-3                      F-00K-102-556  
 Lemo 1B FFG (4mc-4mc), 3 m



ETK Interface Cable 100 Mbit/s, Lemo 1B FFG -                      CBM150-5                      F-00K-102-557  
 Lemo 1B FFG (4mc-4mc), 5 m

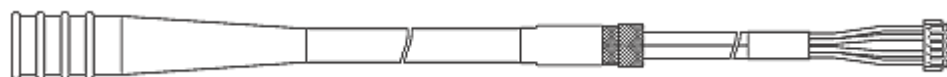


ETK Interface Cable 100 Mbit/s, Lemo 1B FFG -                      CBM150-10                      F-00K-102-553  
 Lemo 1B FFG (4mc-4mc), 10 m

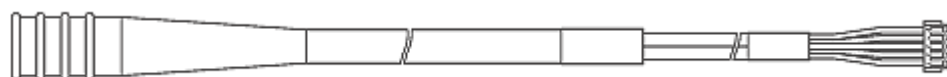


**2 - ETK Connection (for all 100 Mbit ETKs)**

ETK ECU Adapter Cable, Shield on ECU-Housing,                      KA54                      F-00K-001-302  
 Lemo 1B PHG - JST PHR (4fc-5fc), 0m6



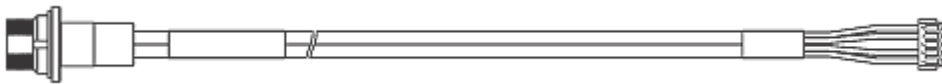
ETK ECU Adapter Cable, Lemo 1B PHG - JST PHR                      KA55                      F-00K-001-303  
 (4fc-5fc), 0m6



---

ETK ECU Adapter Cable, Shield on ECU-Housing,  
Lemo 1B HMG - JST PHG (4fc-5fc), 0m085

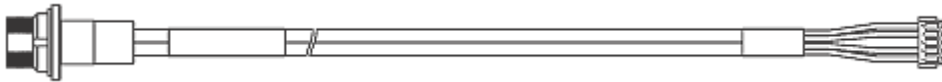
CBAM200.2-0m085 F-00K-104-312



---

ETK ECU Adapter Cable, Shield on ECU-housing,  
Lemo 1B HMG - JST PHG (4fc-5fc), 0m130

CBAM200-0m130 F-00K-104-852



---

ETK ECU Adapter Cable, pre-assembled into PG9  
screwing, shield on ECU- Housing, Lemo 1B PHG -  
JST PHR (4fc-5fc), 0m50

CBAM261-0m5

F-00K-107-754



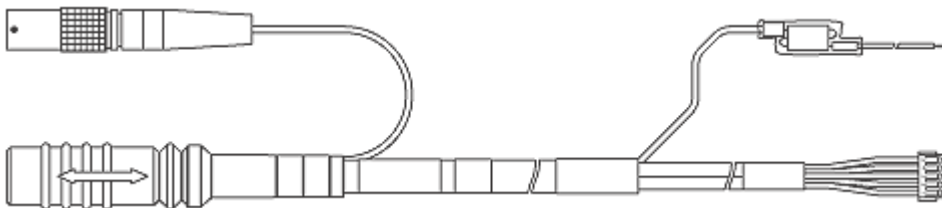
### 2&3 - Combined ETK ECU Adapter and Power Supply Cable (all 100 Mbit ETKs)

---

ETK ECU Adapter and Power Supply Cable, Lemo  
1B PHG - JST PHR (4fc-5fc) / Lemo 0B PHG - open  
wires (2fc-2c), 0m6

CBAM210-0m6

F-00K-104-873

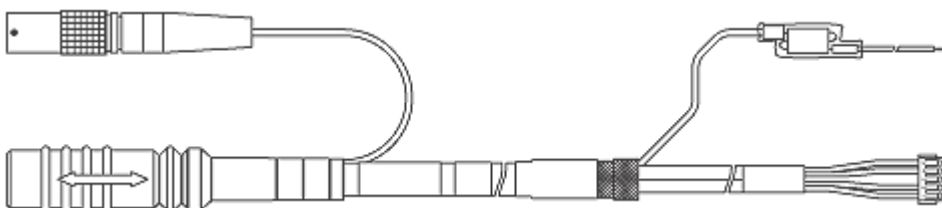


---

ETK ECU Adapter and Power Supply Cable, Shield  
on ECU-Housing, Lemo 1B PHG - JST PHR (4fc-5fc)  
/ Lemo 0B PHG - open wires (2fc-2c), 0m60

CBAM220-0m6

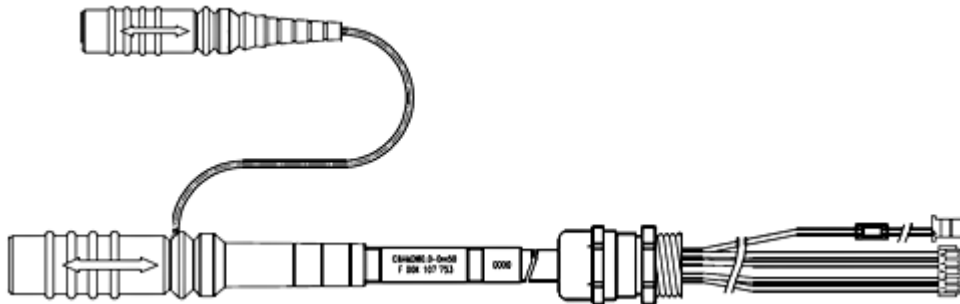
F-00K-105-075



ETK ECU Adapter and Power Supply Cable, pre-assembled into PG9 screwing, shield on ECU-Housing, Lemo 1B PHG - JST PHR (4fc-5fc) / Lemo 0B PHG - JST PAP (2fc-2fc), 0m50

CBAM260-0m5

F-00K-107-753



### 3 - Power Supply Connection

ETK Power Supply Cable with Filter Coil, JST PHR - open wires (2fc-2c), 0m19

ETV2

F-00K-000-593



ETK Power Supply Cable for External Supply, with Filter Coil, Lemo 0B EGG - open wire (2fc-1c), 0m2

KA50

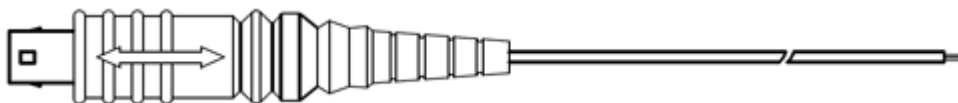
F-00K-000-940



External Power Supply Cable for ETKs, Lemo 0B - FGG open wires (2fc-1c), 2 m

K70.1

F-00K-109-270



ETK power supply for 6-36V DC input

ETP1

F-00K-000-624

ETK power supply for 4,3-36V DC input, with galvanic isolation

ETP2

F-00K-104-010

### 4 - ECU Connection

ETAF1 ETK ECU Adapter, Erni - Erni (26fc - 26fc), 0m1

ETAF1

F-00K-001-373

### Debugger Connection

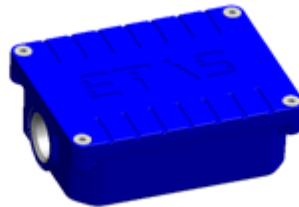
---

Debug Adapter for Renesas SH72xx-Debugger to ETK	ETAF6	F-00K-104-773
--	-------	---------------

### Housing

---

Water-proof case, designed for ETK-S4.x, ETK-S6.x and ETK-S2x	ETKS_C3	F-00K-107-683
---	---------	---------------



### ECU Connection Protection Cap (for CBAM230, CBAM240)

---

Cap to protect open Lemo 1B sockets against dirt, cost effective	CAP_LEMO_1B_LC	F-00K-105-683
--	----------------	---------------




---

## 5 – Ethernet PC Connection

Further information on the Ethernet PC Connection, can be found in the [cable page Ethernet Connection](#).

Note: This list contains only a selection of available adapters. A comprehensive overview is available in the User Guide of each ETK.

