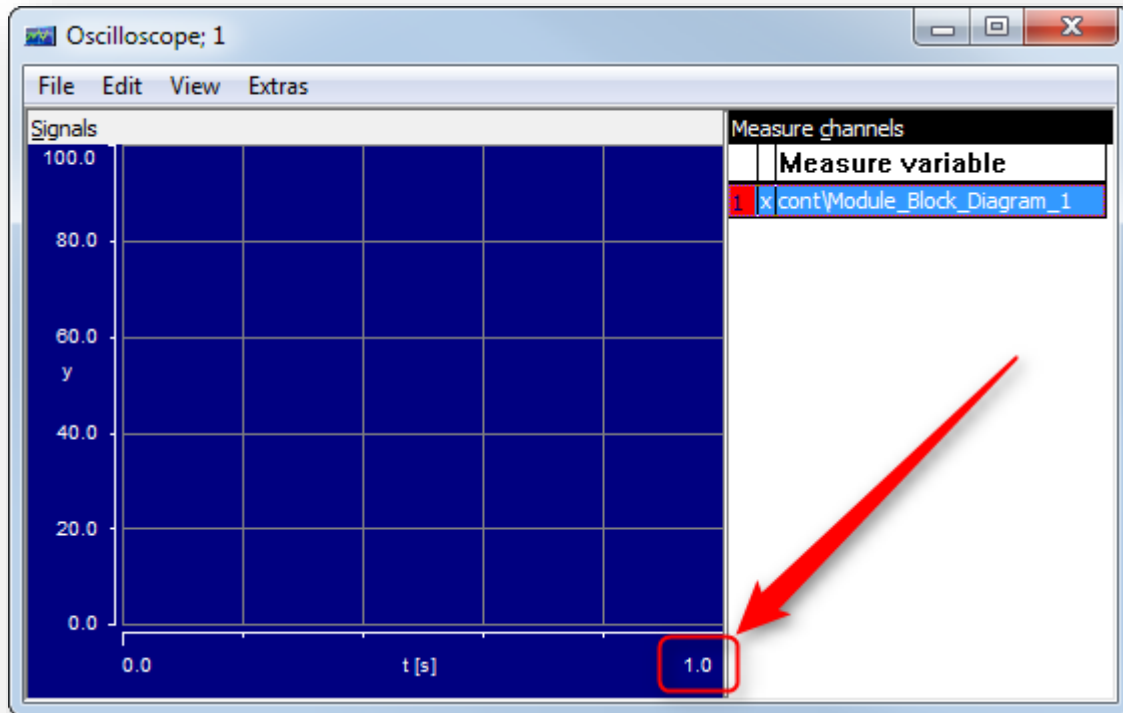


ASCET Physical Experiment: How to adjust X axis of oscilloscope



Question:

- How to adjust the X axis of an oscilloscope in dialog **Physical Experiment**?
- The oscilloscope shows values in a time range of 1 second

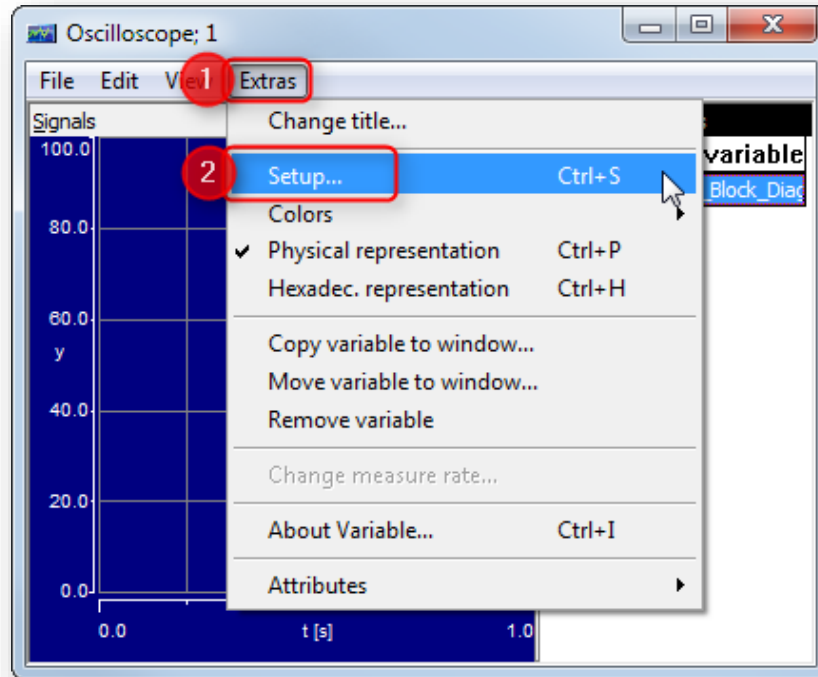


- How can I adjust this setting?
- I want to display more than 1 second. How to extent the time range?

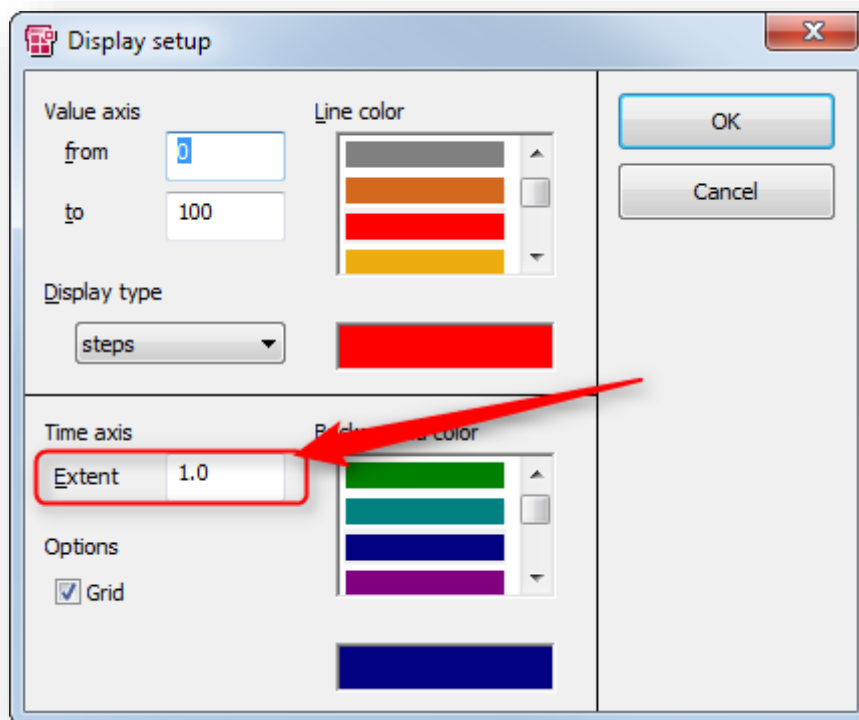


Answer:

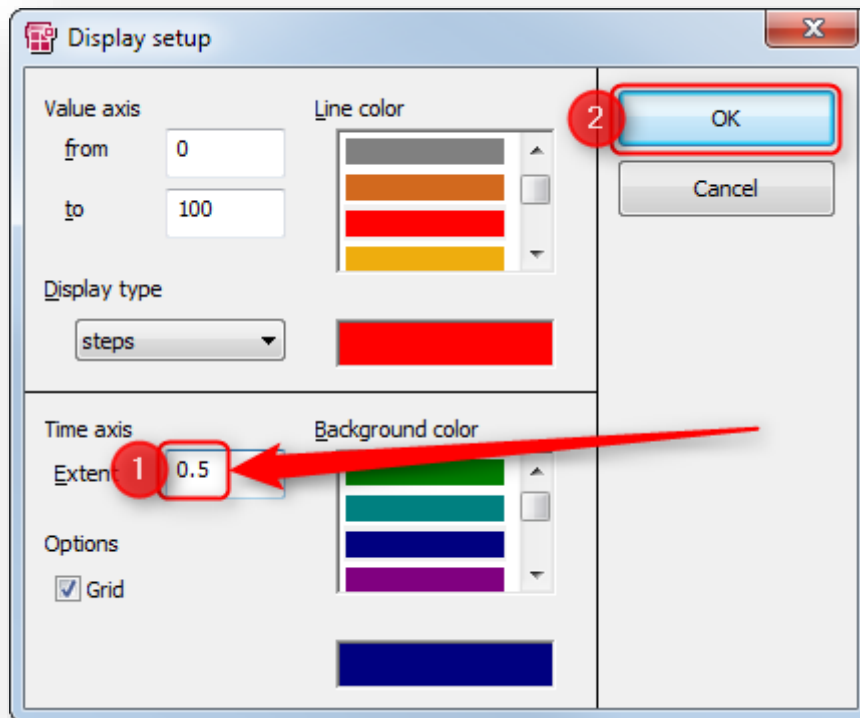
- In dialog **Oscilloscope** > Menu bar > **Extras** > **Setup...**



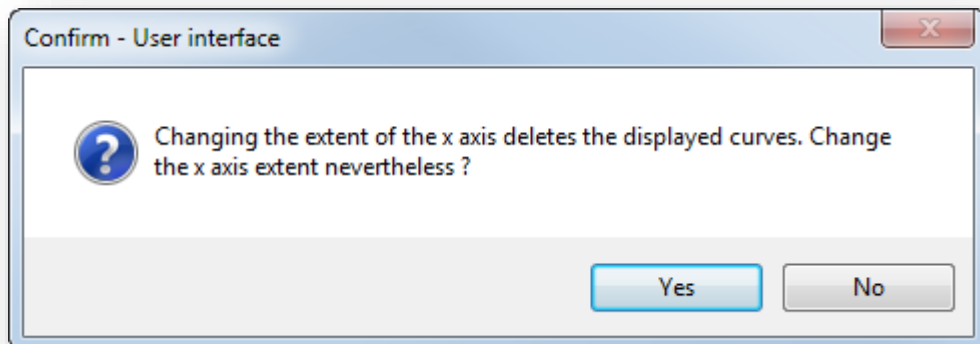
- In dialog **Display setup** > Under **Time axis** > **Field Extent**



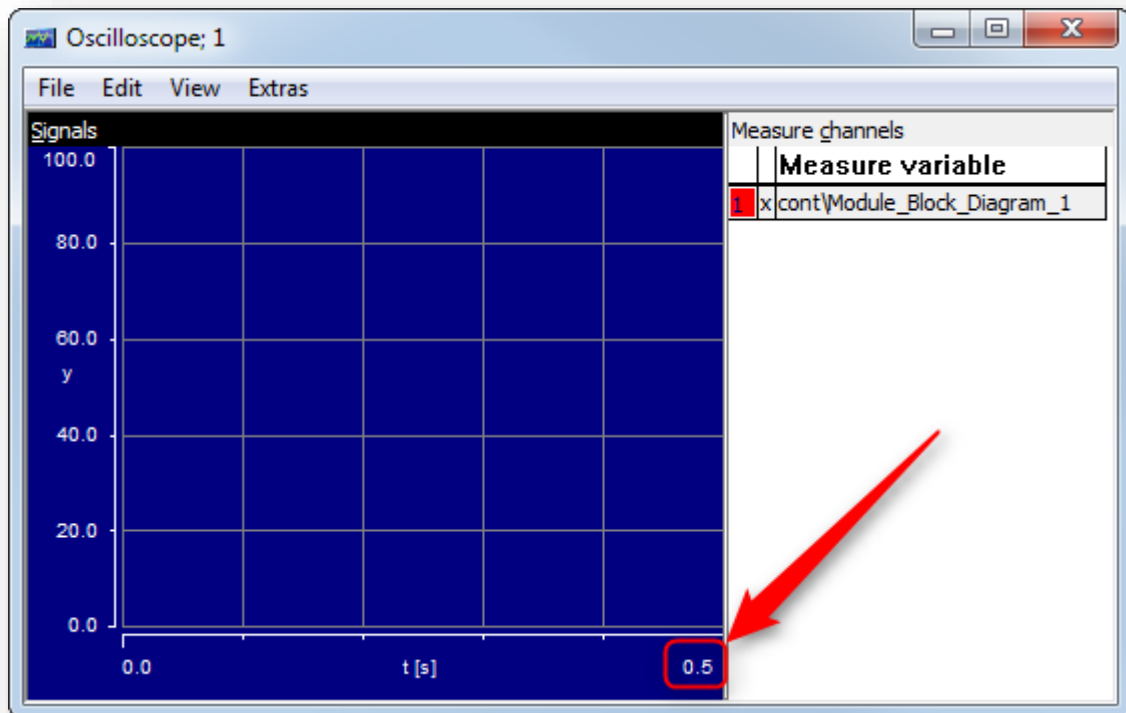
- Enter a different value, for example **0.5**, then click **OK** button



- A confirmation dialog ("Confirm - User interface") will show up > Click **Yes** button



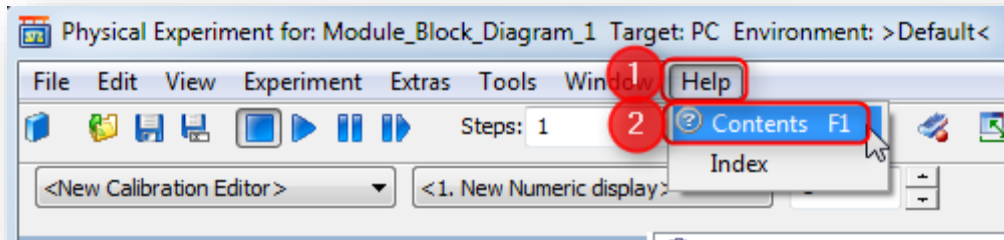
- Time range is adjusted accordingly to the entered value



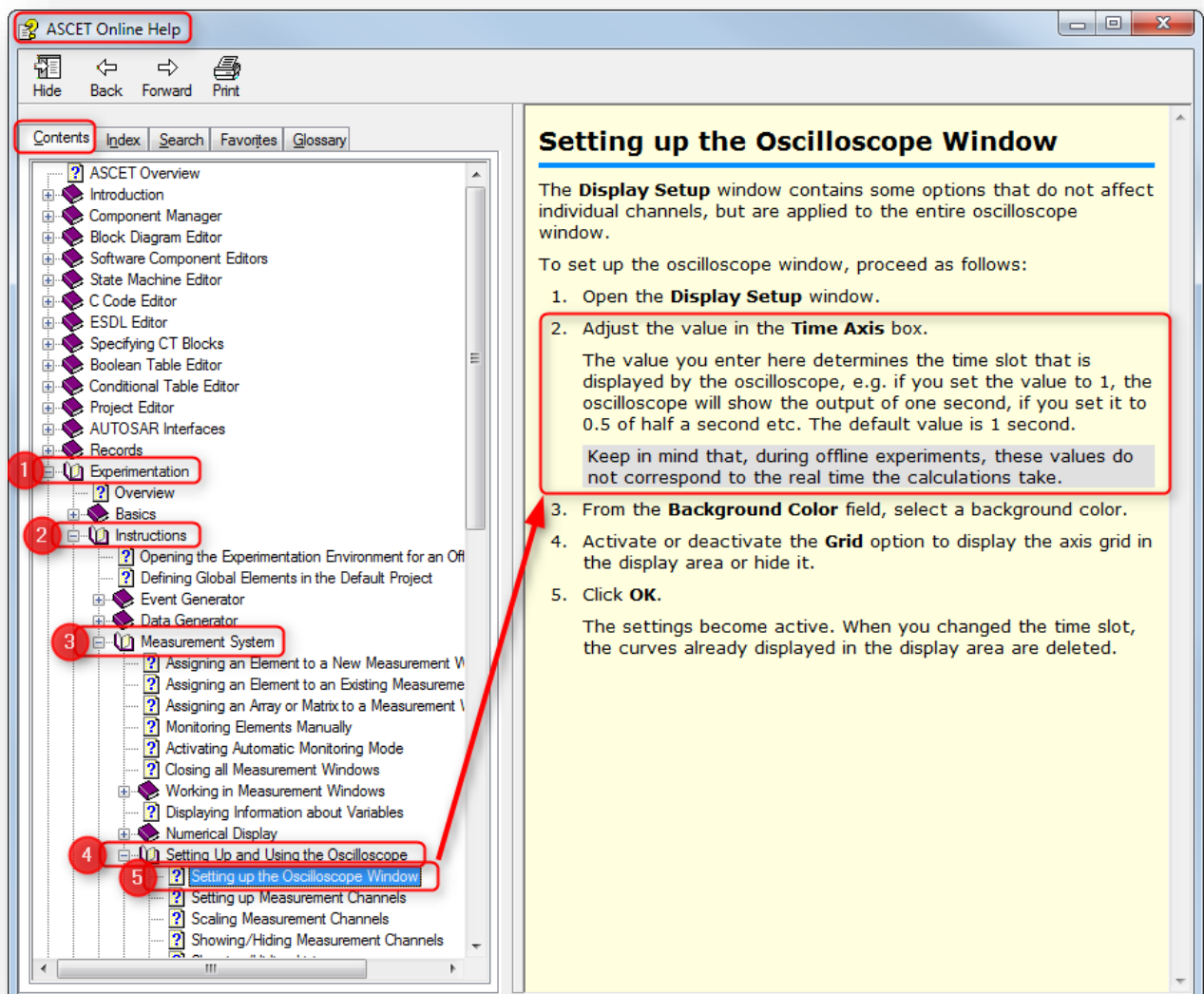


Additional information:

- Find further information in the **ASCET Online Help**:
- In dialog **Physical Experiment for: ...** > Menu bar > **Help** > **Contents**



- In dialog **ASCET Online Help**: Tab **Contents** > **Experimentation** > **Instructions** > **Measurement System** > **Setting Up and Using the Oscilloscope** > **Setting up the Oscilloscope Window**





Do you still have questions?

- You will find **further FAQ articles** on the ETAS homepage: www.etas.com/en/faq
- **Movies** corresponding to FAQ articles can be found on the [ETAS YouTube channel](#) as well
- Please feel free to contact our Support Center, if you have further questions.
- Here you can find all information: <http://www.etas.com/en/hotlines.php>

This information (here referred to as „FAQ“) is provided without any (express or implied) warranty, guarantee or commitment regarding completeness or accuracy. Except in cases of willful damage, ETAS shall not be liable for losses and damages which may occur or result from the use of this information (including indirect, special or consequential damages).